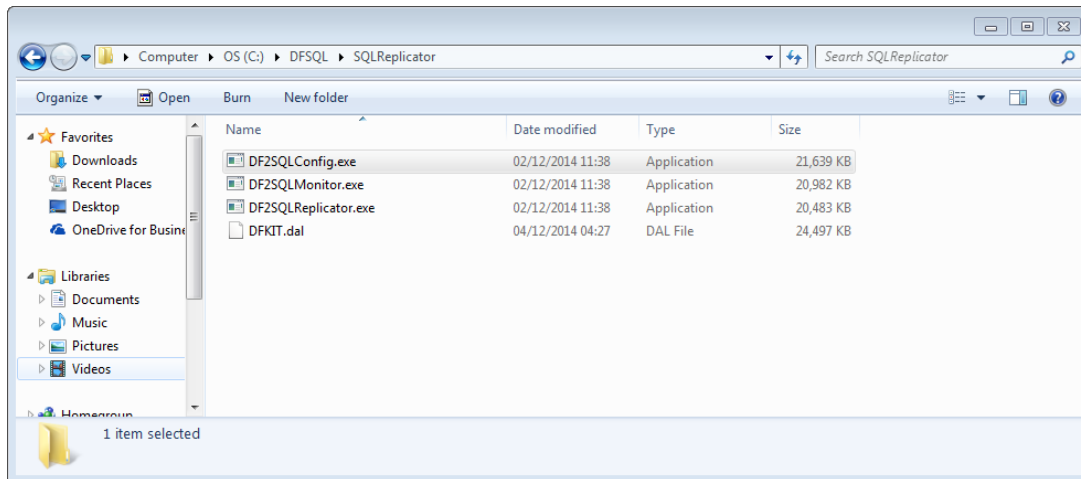


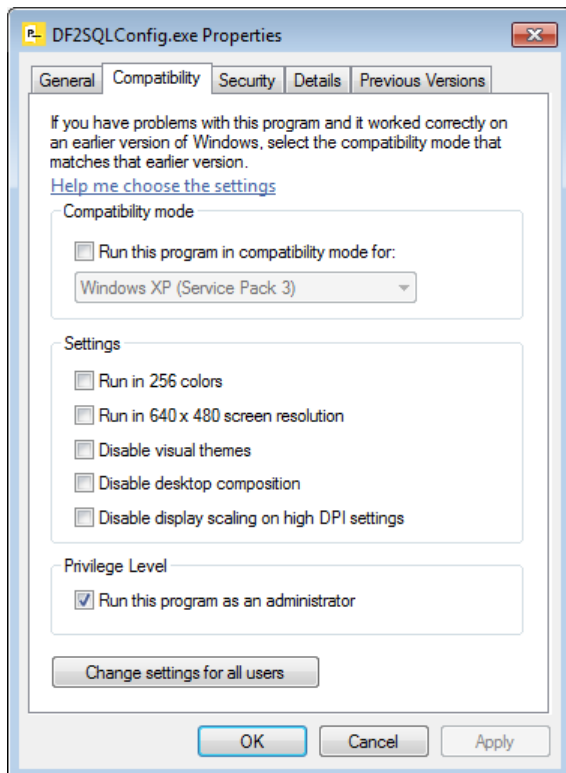
# Datafile SQL Replicator

## Installation

The SQL Replicator files are supplied as a zip compressed archive. Create a folder on the main drive of a PC that has access to both the Datafile System and the SQL Database (whether that is installed on the pc or accessed over the internet / local area network) and unzip the supplied files into this folder.



The supplied SQLDET.DFD should be updated into the main DFCOMP location of the Datafile System (usually DFWIN\DATA)



Update the programs links for DF2SQLMonitor and DF2SQLConfig so they are set to 'Run as Administrator' by default.

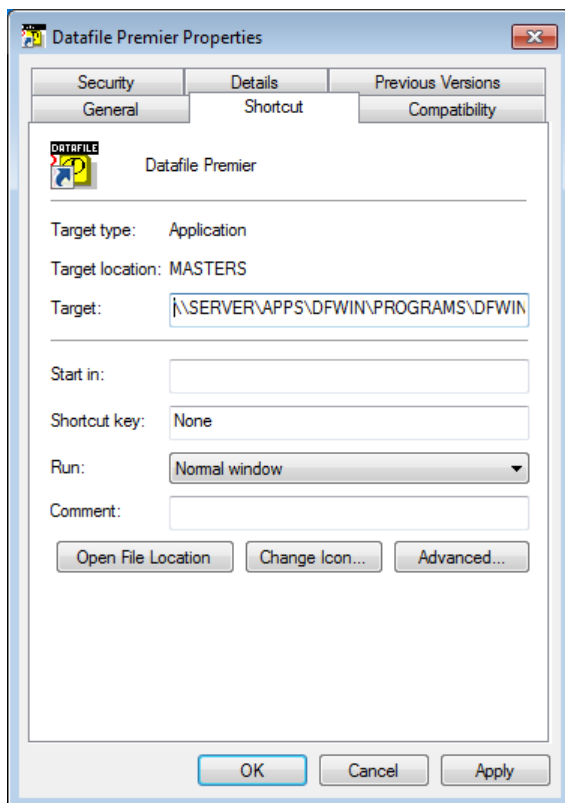
## Installing the Service

Run the Command Line Utility as 'Administrator' and change to the SQL Replicator installation folder and enter

```
DF2SQLReplicator.exe /install
```

to install the service.

## Datafile System Configuration



As the SQL Replicator runs as a service Datafile should be configured to use UNC paths and not mapped drive letters on all workstations.

Update the Datafile icon and, optionally, the DFWIN.INI to reference the Datafile System using UNC paths rather than drive letters.

Internally within Datafile 'Location of Files' settings and parameter files such as the DATAFILE.INI should use relative paths where possible (. \ DATA \ etc.)

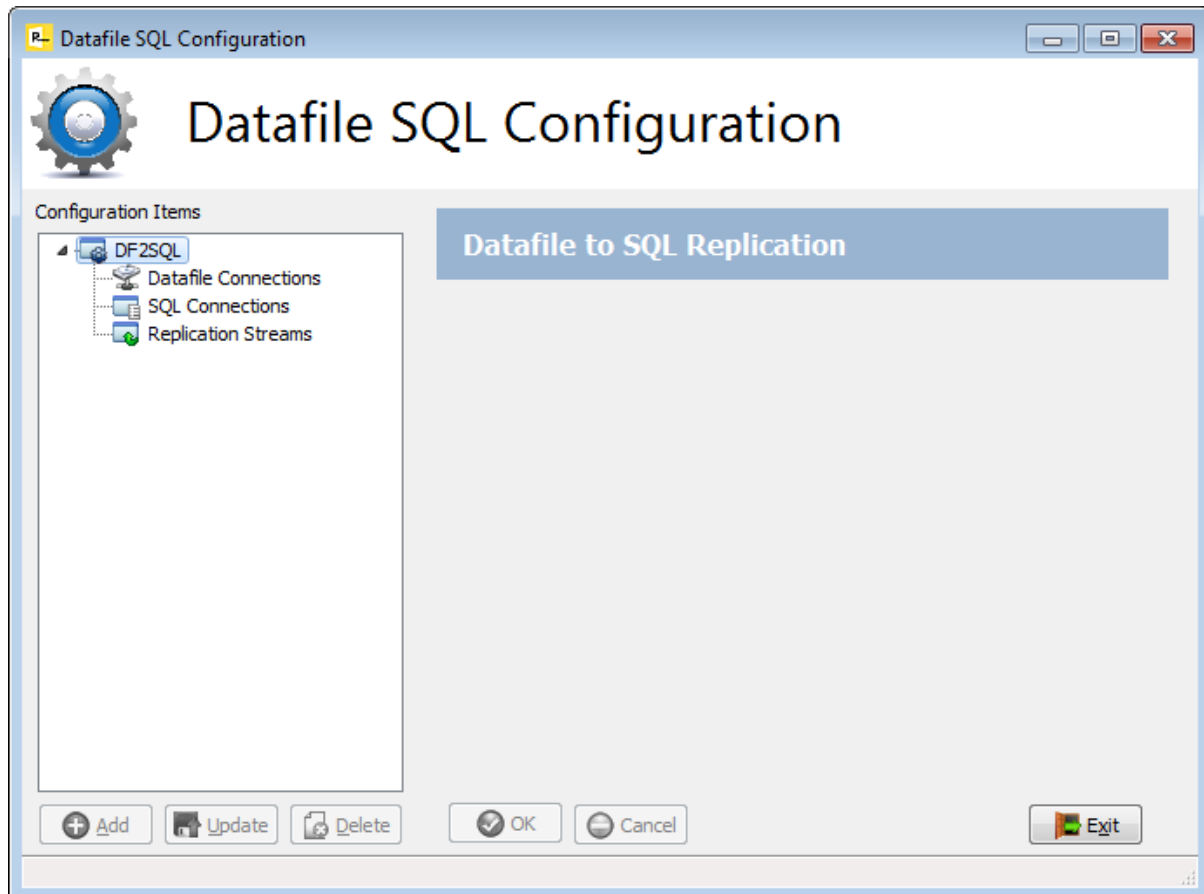
If installing SQL Mirroring for the first time ensure at least one Database is set to be mirrored to SQL by Restructuring the Database and setting the mirror flag within the Advanced Feature options. Also sign on with the MASTER user-id and create a series of user names –

DFSQL, DFSQL0 and DFSQL1 each with password of DFSQL at entry numbers 90/91/92.

If you have used SQL Mirroring previously and specifically the ExcelRTD add-in switch OFF the SQL Mirroring on the SQLTBL.DFD – the SQL Replicator will create automatically a version of this table.

## Datafile SQL Configuration (DF2SQLConfig.exe)

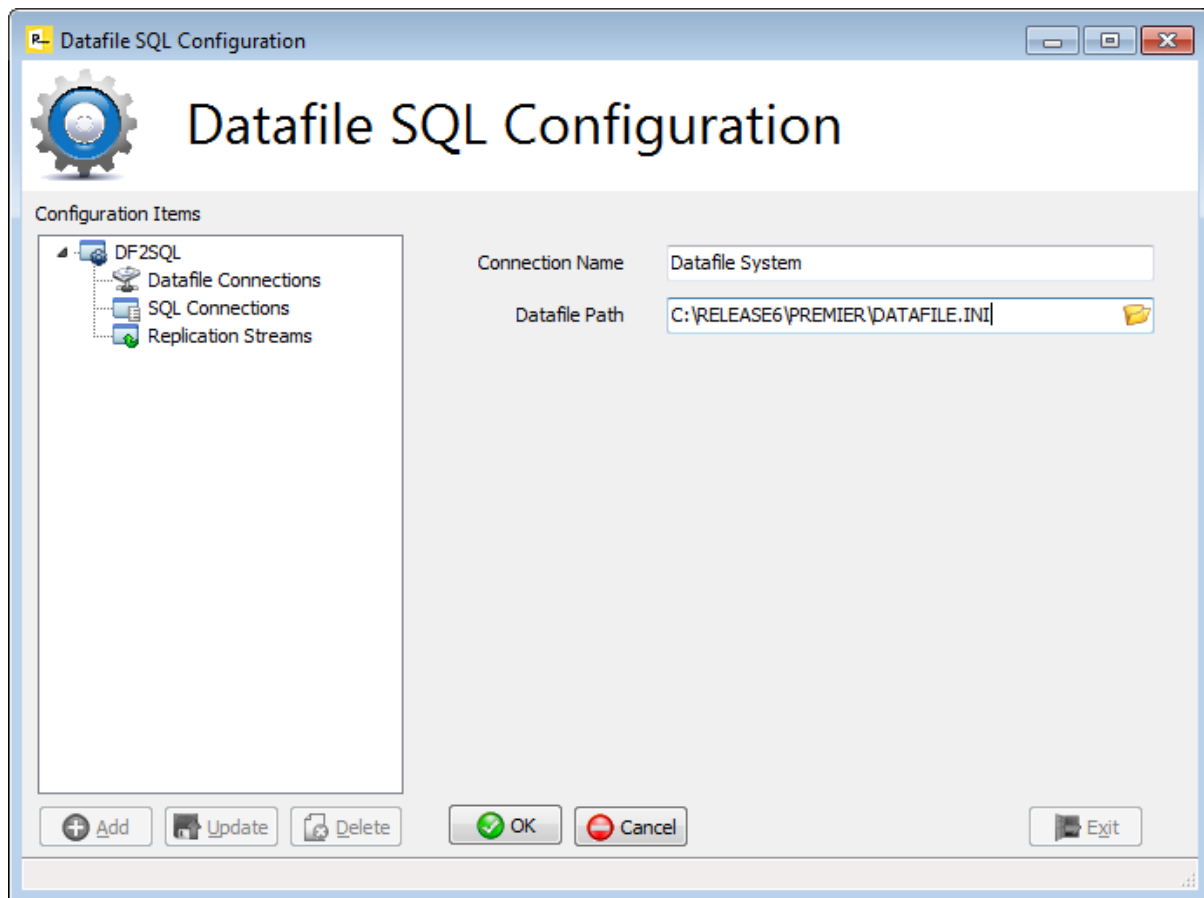
The DF2SQL Configuration program allows definition of the links between the Datafile system and the SQL Database.



The link is in three parts

- 1) Datafile Connection – define one or more Datafile Systems to link to
- 2) SQL Connection – define one or more SQL Databases to link to
- 3) Replication Streams – pair a Datafile System with a SQL Connection and select which Datafile Databases are included in a replication stream.

## Datafile Connections



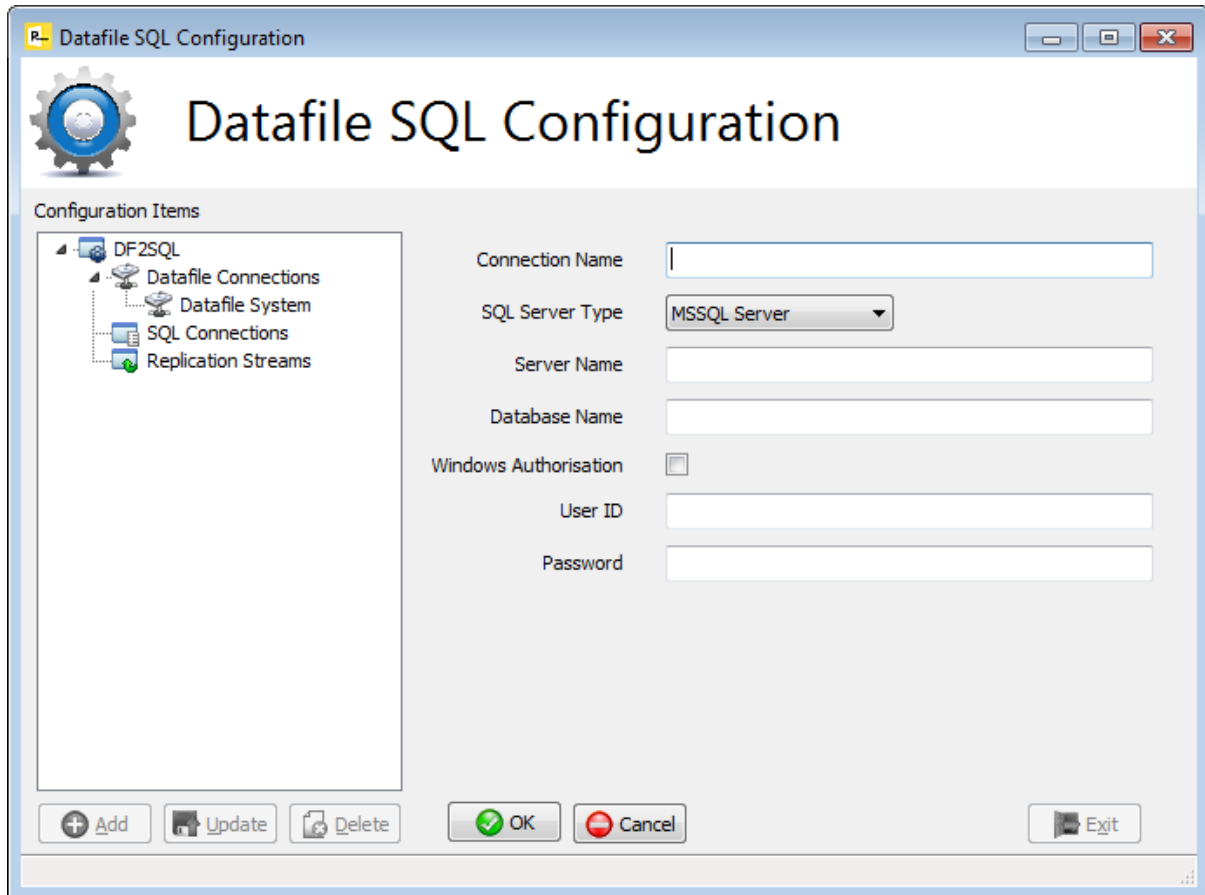
To Add select the Datafile Connection option and select the ADD action.

**Connection Name** – enter descriptive title for the Datafile System (this could be company name, etc.)

**Datafile Path** – enter path for the DATAFILE.INI of the system (include DATAFILE.INI within the path)

Once selected click the OK option to SAVE

## SQL Connections



To Add select the SQL Connections option and select the ADD action.

**Connection Name** – enter descriptive title for the SQL Connection

**SQL Server Type** – select from MsSQL, MySQL and Oracle SQL Servers.

**Server Name** – enter the SQL Server Name

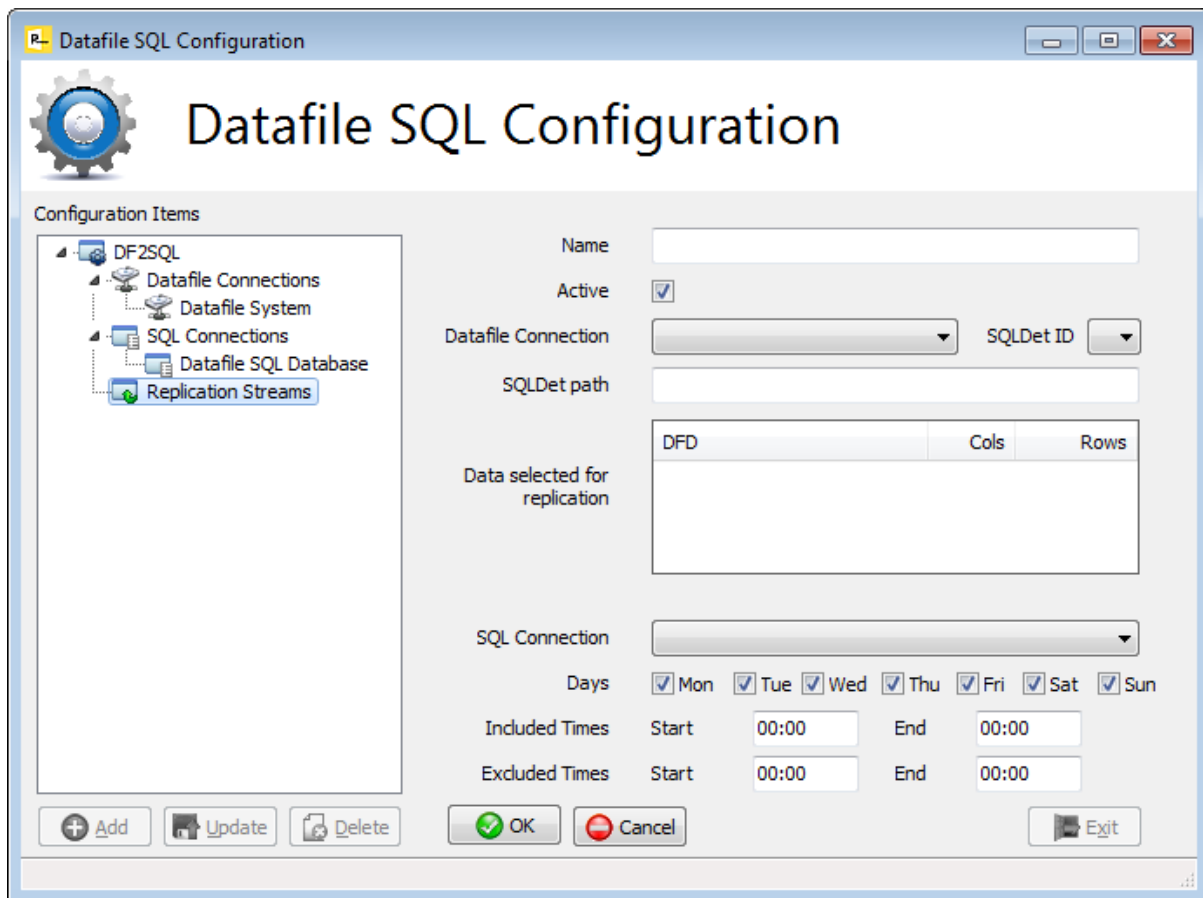
**Database Name** – enter the SQL Database (create this Database using the SQL Management Studio / Workbench options as necessary).

**Windows Authorisation** – applicable to MsSQL only set to use Windows Authentication, leave blank to use the entered user-id / password.

**User ID / Password** – enter the User ID and Password. Note that the User ID entered should have full rights to create/alter/drop tables and insert/change/delete rows within a table.

Click OK to SAVE

## Replication Streams



To Add select the Replication Streams option and select the ADD action.

**Name** – enter descriptive title for the replication stream.

**Active** – set to activate the replication stream.

**Datafile Connection** – select the Datafile Connection to be used from the pre-defined list.

**SQLDET ID** – select the replication stream to use. Up to eight replication streams can be defined for one SQLDET.DFD – set the ID number for this stream.

**SQLDET Path** – enter pathname for the SQLDET.DFD (include the filename within the path)

**Data Selected for Replication** – the system will read the DFSQL.INI (the Datafile list of files set to be mirrored automatically created in the DFCOMP location) and list the databases set to be mirrored. Select which databases to include in this replication stream (right click to Select All if required)

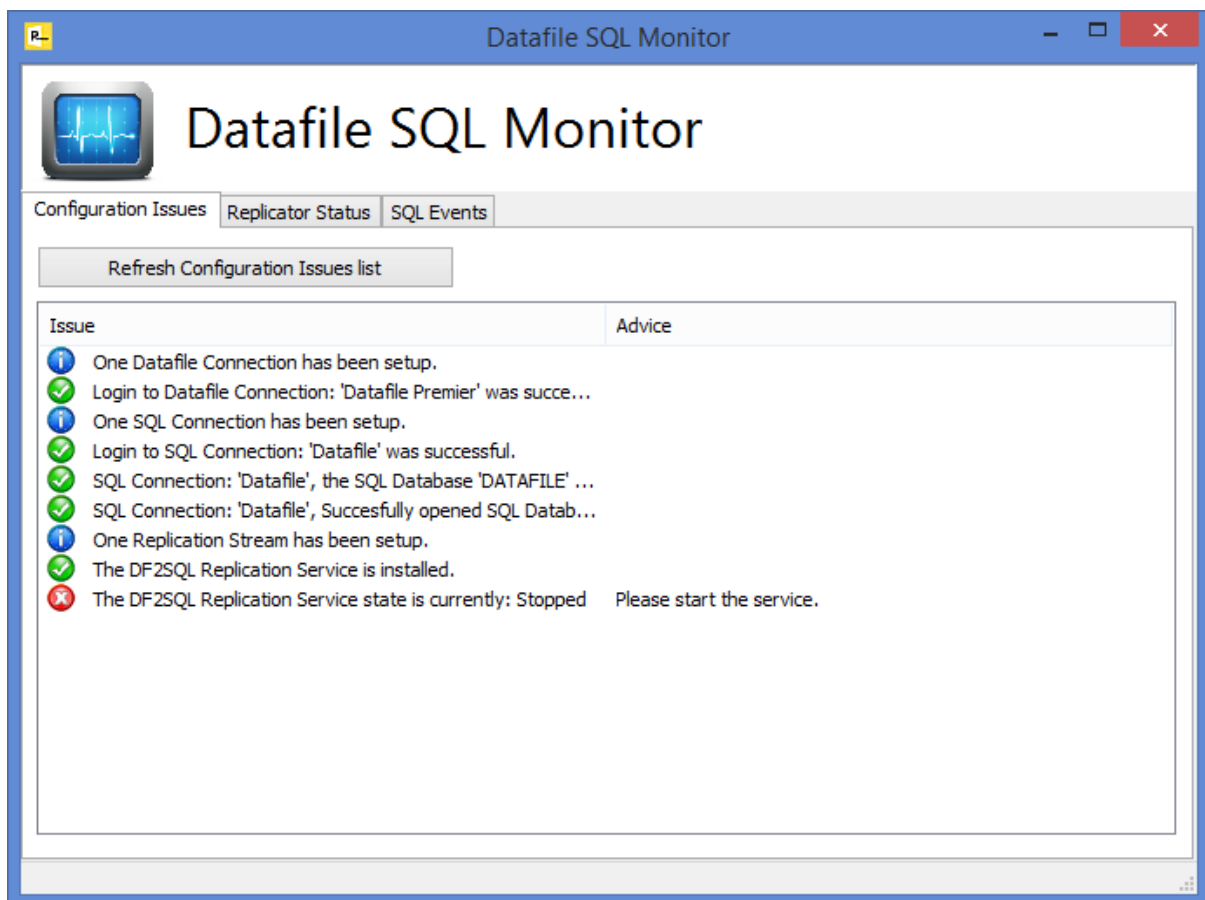
**SQL Connection** – select the SQL Connection from the pre-defined list.

**Days / Include & Exclude Times** – set which Days and Times on which the service is to actively replicate. You may wish to pause the Service for backups etc.

Click OK to SAVE

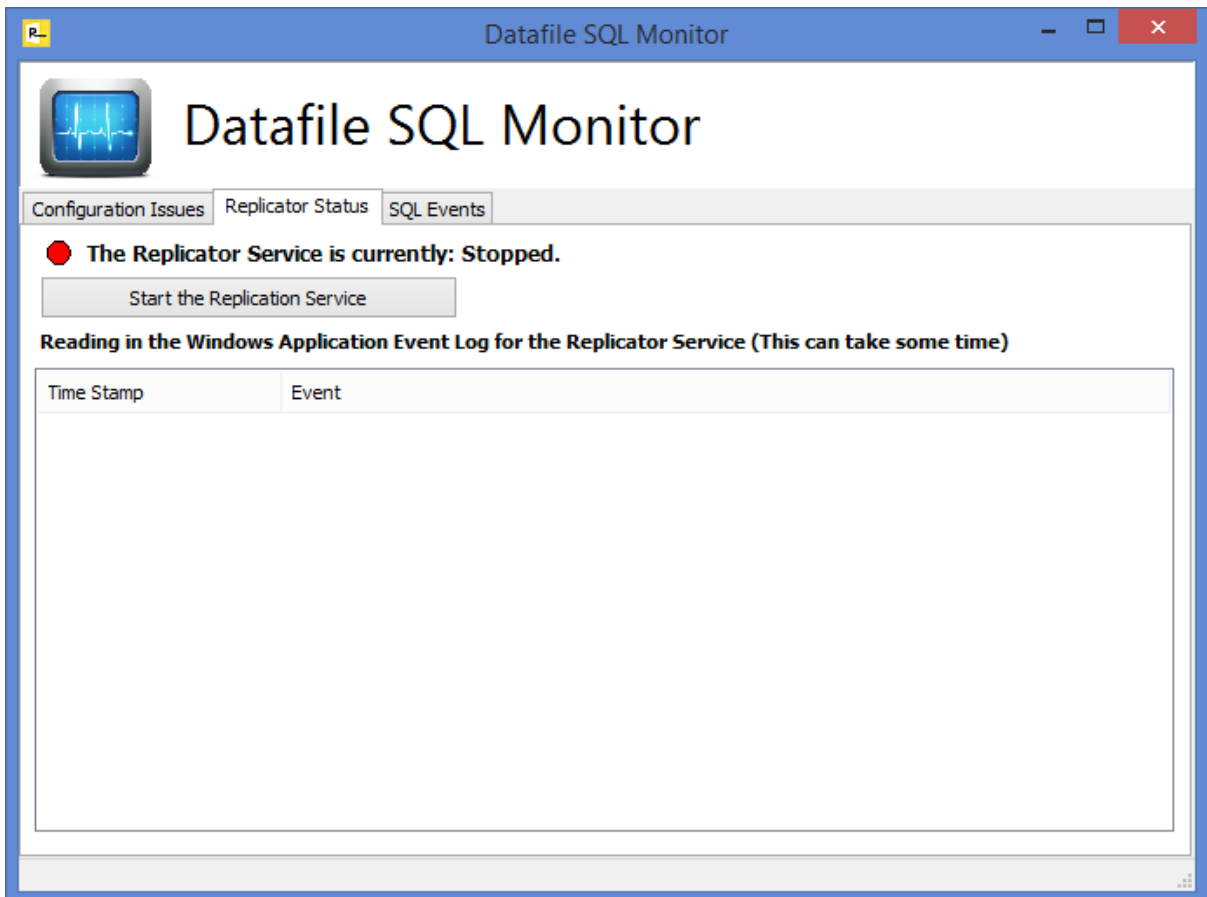
## Datafile SQL Monitor (DF2SQLMonitor.exe)

The Datafile SQL Monitor allows for validation of the set Datafile Connections, SQL Connections and Replication Streams and warns of any errors in set-up and configuration. It also allows access to Start/Stop the Replication Service and to monitor the activity of the SQL Replication Service.

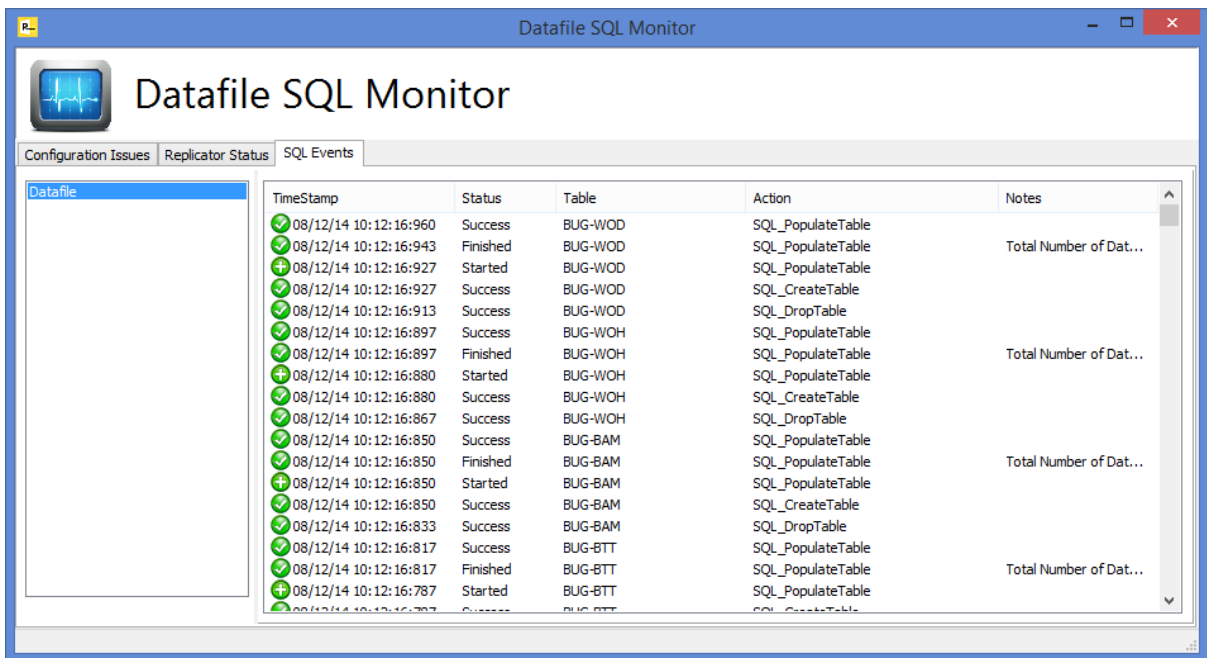


The Monitor has three tables – Configuration Issues, Replicator Status and SQL Events. On the Configuration Issues tab the system validates the Datafile and SQL Connections and Replication Streams before checking whether the Replication Service is installed and running.

The Replicator Status tab allows you to Start the Replicator Service and also displays information from the Windows Event Log in relation to the Datafile SQL Replicator.



Finally the SQL Events tab displays the process event log for the SQL Replicator – showing the table creations and updates.





## DF2SQLReplicator Service

Once the SQL Replicator is installed and running you need to update the Services list so that the Replication Service will automatically start on server/pc reboot. To update the Services list open up the Control Panel, System and Security, Administrative Tools, and select the Services shortcut.

Right-click against the DF2SQLReplicator entry and choose Properties and change the Start-Up type to 'Automatic (Delayed Start)'

