

Monthly Bulletin

July 2013

D A T A F I L E

s o f t w a r e

this issue

Datafile 2013 Update **P.1**

Schedule Runs **P.2**

Welcome

Welcome to the July newsletter for reseller partners of Datafile Software.

If you have any suggestions for issues you would like to see covered in future newsletters please contact the team via the email address below.

Terry Moore

Managing Director
Datafile Software Ltd

Contact Details

Telephone
0845 643 2766

Facsimile
0845 643 2624

Email
office@datafile.co.uk

Website
www.datafile.co.uk

ADDRESS

Datafile Software Ltd
Windgate Lodge
1c Tarleton Office Park
Windgate
Tarleton
Lancashire
PR4 6JF



Datafile 2013—New Version, New Features

Development continues on the Datafile 2013 version. Below is a sneak peak of the application dashboard—this option allows you to display up to four configurable panels for each application.

Options available include Top 10 / Bottom 10 application records (here configured to show the top 10 debtors and the top 10 overdue balances). A bar chart display option is also available for these values.

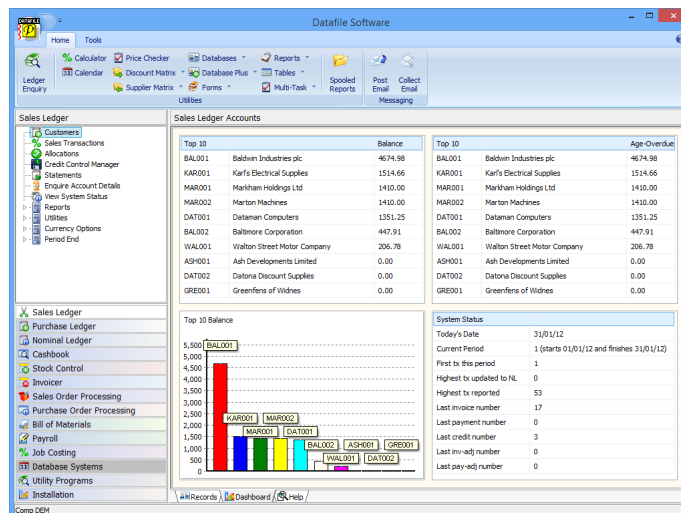
Similarly options are available to show Top 10 / Bottom 10 summaries allowing you to accumulate totals for the account analysis group or stock

groupings. Again a bar chart display option is available for these groups.

Last Activity options are available that can be selected to display the last ten transactions added and/or the last ten account records added (depending on the application).

Finally a System Status option is available that displays application status information (current period, last invoice numbers etc.)

Each application has its own configuration settings so you can structure the display to your requirements.



Scheduled Run of Datafile Procedures

As your system develops you build up a series of Datafile procedures which you run as part of your daily / weekly routines—these could include:

- ◆ Sales Order imports
- ◆ XML invoice creation,
- ◆ Auto Invoice Prints
- ◆ Save Aged Analysis
- ◆ Daily/Weekly Reports

In addition to manually triggering these processes you can optionally create a procedure that can launch these actions from your operating systems Task Scheduler at a set time.

The RUN file is a text file (similar to the DATAFILE.INI) that defines the option to run together with the user log-on credentials. The content of the file is structured as:

```
USERID=User  
PASSWORD=Password  
COMPANY=Company  
PROGRAM=Program Name  
PARAMETER=Parameter Number
```

If for example you wished to run a sales order import procedure then you could create a ORDERIMP.RUN file as:

```
USERID=AUTO  
PASSWORD=  
COMPANY=ABC  
PROGRAM=SP.EXE  
PARAMETER=770101A
```

Alternatively to run the Saved Aged Analysis procedure (run in the Credit Control Manager) you could create a AGE.RUN file as

```
USERID=AUTO  
PASSWORD=  
COMPANY=ABC  
PROGRAM=SL.EXE  
PARAMETER=7753A
```

To call a Profiler procedure (such as a Q menu which runs various reports then you could create a REPORT.RUN file as:

```
USERID=AUTO  
PASSWORD=  
COMPANY=ABC  
PROGRAM=PF.EXE  
PARAMETER=ABC/M/O
```

The Parameter here is built up from the application id, the menu option number and the option number to be called.

To call the process from a desktop shortcut you call the DFWIN.EXE and then add arguments for the run file i.e.

```
"F:\DFWIN\PROGRAMS\DFWIN.EXE F:\DFWIN\ORDERIMP.RUN"
```

If no DFWIN.INI in C:\WINDOWS you would also append the pathname for the location of the DATAFILE.INI for your system.

Once you have a command that can be triggered outside of Datafile this can be added in to your task scheduler to run on a required frequency.



Minimum Wage Rates

The Department of Business, Innovation and Skills has announced the new minimum wage rates that take affect later this year.

The following rates come into affect from 1st October 2013.

- ◆ The adult rate will increase 12p to £6.31 an hour.
- ◆ The rate for 18-20 year olds will increase by 5p to £5.03 per hour.

- ◆ The rate for 16-17 year olds will increase by 4p to £3.72 per hour.
- ◆ The apprentice rate will increase by 3p to £2.68 an hour.